

## DF4R: 4 relay output module

DF4R modules allow the driving, through the bus **Domino**, of 2 loads, such as lamps, small heater, etc.

DF4R module provides a 2-pole terminal block for the connection to the bus; as all modules of **Domino** family, the bus itself carries the power supply for the module operation.

On the top side, the module features a small pushbutton with double function (see the related paragraph) and a green LED that shows the operating status; the same green LED normally flashes every 2 seconds about to signal that the module is properly supplied and operating. A small connector (PRG) allows the connection to the optional tester/programmer.

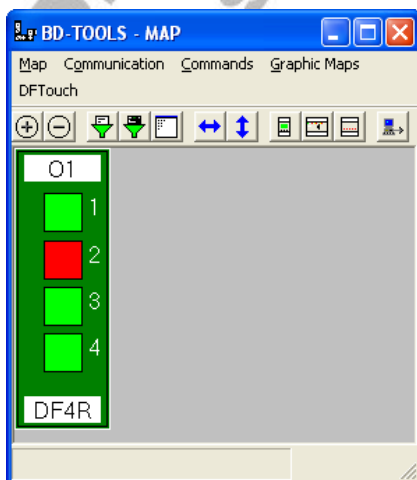
A 5-pole terminal block allows the connection of four loads; each relay provides its normally open contact. DF4R is a module specifically developed for ON-OFF driving of lamps for domestic appliances; by one or more pushbuttons connected to one or more input modules (DF4I), it is possible to control the switching ON and OFF of the load, directly or through step by step sequences, logic combinations, etc.

For more details about the address assignment and the functions that can be programmed, refer to the related documentation.

A white label on the top panel allows the writing of the assigned module address for an immediate visual identification. The small dimensions of DF2R module allow the housing directly in the standard rectangular wall box, like standard box 503 or similar types, completed by the frame and the cover plate of the preferred manufacturer.

**Note: this data sheet applies DF4R module equipped with firmware 6.1 or higher.**

## Mapping



DF4R modules are displayed on the map of BDTools as in the figure on this left side.

As for all **Domino** modules, the background of the module is in green color if the module is connected and properly working, otherwise the background is in red color.

As usual, the status of the outputs is shown on

the map in red or green color respectively depending on the active or not active status of the related point.



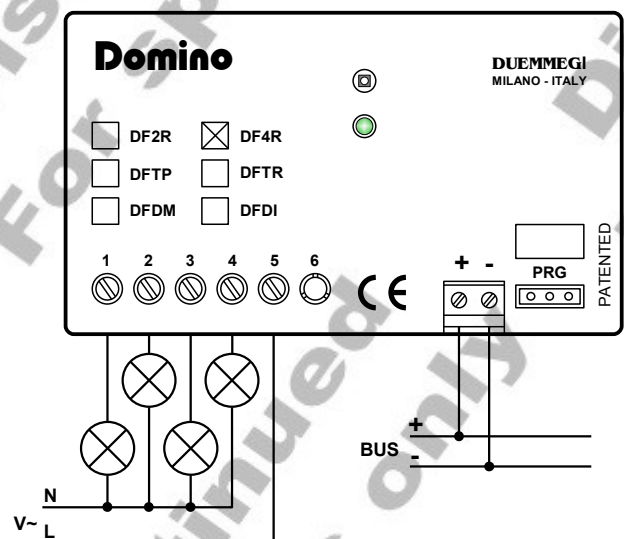
## Functions of the local pushbutton

The pushbutton on the module has a double function: pushing it for a time lower than 3 seconds, the module switches to the addressing mode, during which the LED on the module is fixed lighted; the addressing mode will be active until the module receives the address and anyway no more than 10 seconds from the last release of the pushbutton. When the module enters the addressing mode, all outputs will be switched off.

Holding down the pushbutton for more than 3 seconds, the module switches to the test mode; the LED signals this condition by a regular blinking (1s ON and 1s OFF). At every successive pushing of the button all the output will be alternatively switched between ON and OFF. The module exit the test mode after 30 seconds from the last release of the pushbutton.

## Module connection

DF4R module can be connected to 4 loads (e.g. lamps); the following figure shows the connections to be made for the proper operation.



### Technical characteristics

Power supply (bus side)	By specific centralized power supply mod. DFPW2
MAX Contact rating (each output)	<ul style="list-style-type: none"> <li>Resistive load (cosφ = 1): 5A at 250V~ (1250VA)</li> <li>Inductive load (cosφ = 0.85): 3.6A at 250V~ (900VA)</li> <li>Capacitive load (C=10uF MAX): 1A at 250V~ (250VA)</li> </ul>
MAX switching voltage	250V~
Operating temperature	-5 ÷ +50 °C
Storage temperature	-20 ÷ +70 °C
Protection degree	IP20

**Note:** the sum of the currents simultaneously applied to the contacts must be lower than 8A.

### Outline dimensions

