

**ModANA: network analyzer module
for CONTATTO bus**

ModANA module allows the detection electrical variables of a three-phase and single-phase network. The module interfaces directly to the CONTATTO bus, thus making the measurements immediately available and easy to use. The measurements are also showed on the front panel by a back-lighted LCD display.

Among the several available measurements, shown on the display of the module (with the symbol showed in the following table), ModANA can report on the bus up to 20 variables to be chosen among the following:

Variables	Symbol	Measured units
3 Phase voltages	V1N V2N V3N	[V]
3 Linked voltages	V12 V23 V31	[V]
1 Linked average voltage	Vtm	[V]
3 Currents	I1 I2 I3	[A]
1 Average current	Itm	[A]
3 Active powers	P1 P2 P3	[W]
1 Total active power	Ptot	[W]
3 Reactive powers	Q1 Q2 Q3	[VAR]
1 Total reactive power	Qtot	[VAR]
3 Apparent powers	S1 S2 S3	[VA]
1 Total apparent powers	Stot	[VA]
3 Phase power factors	PF1 PF2 PF3	-
1 Total power factor	PF	-
1 Frequency	Frequency	[Hz]
1 Positive active energy	Wh (+)	[Wh]
1 Negative active energy	Wh (-)	[Wh]
1 Positive reactive energy	VARh (+)	[VARh]
1 Negative reactive energy	VARh (-)	[VARh]
1 Average positive active power	Pm (+)	[W]
1 Average positive reactive power	Qm (+)	[VAR]
1 Hour-meter	Hour Meter	[ore]
1 Cabinet temperature	Temperature	[°C]

ModANA module also provides the possibility to reset:

- x Energies
- x Hour-meter

The module features a 5-way removable terminal block for the connection to CONTATTO bus and two 9-way fixed terminal blocks for the connection of aux power supply and three-phase or single-phase line as described in the related User's Manual.

The module also features a back-lighted high contrast LCD display, 2 lines x 16 characters; for more details about the several possible settings of the measurement section, refer to the related User's Manual.

ModMETEO module is housed in a DIN 6M modular box for rail mounting.

Note: ModANA can work only in plants where the MCP XT controller has been installed; the setting and the programming of MCP XT needs MCP IDE software tool.

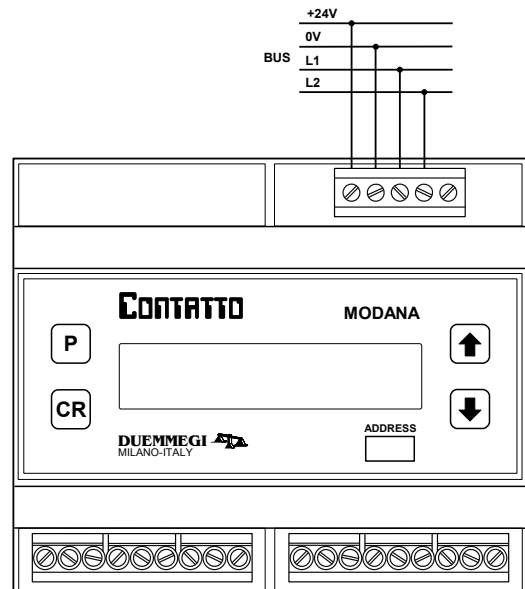


Address programming

ModANA module takes, in dynamic mode, up to a maximum of 5 consecutive input addresses and, if enabled, 1 output address equal to the base address; the address must be assigned by FXPRO programmer. A white label on the front panel allows the writing of the assigned base address for an immediate visual identification. The effective amount of taken addresses depends on the number of measurements to be transferred on the bus; this setting must be executed by ANATools, the specific configuration tool provided by MCP IDE.

Wiring diagram

The following schematic diagram shows the connection between ModANA module and CONTATTO bus.



For details about the connection to the three-phase or single-phase line and to the aux power supply, refer to the related User's Manual. The connections must be executed after having disconnected the power supply.

Information reported on the bus

Input section

As said above, ModANA module takes, inside **CONTATTO** bus, up to 5 addresses with 4 channels 16-bit format, each one reporting the measurements chosen during the setting up. The value reported in the channel of the several addresses are expressed in the measured units selected during the setting up, taking attention to the following details:

- x the power factors are given in two's complement in the range -1000 to +1000
- x the reactive powers are given in two's complement in the range -32768 to +32767
- x each energy counters takes 3 channels (48 bits), being split in 3 parts (1-2, 3-4 and 5-6) to be combined as described in a following paragraph

Output section

The module can feature 1 output address for resetting the energy measurements and the hour-meter; this address has to be enabled, if required, by the ANATools configuration panel, as described in the following. The output section, if enabled, features a single channel (CH1) with 2 digital points forcing, when activated, the following actions:

- x Point 1: reset the energy counters
- x Point 2: reset the hour-meter

ModANA configuration panel

The configuration panel available in MCP IDE release 3.0.4 or higher allows the setting up of ModANA module as required.

The configuration of the module is performed through the **CONTATTO** bus as described in the following.

All ModANA modules installed in the plant must be declared in the configuration of MCP XT, specifying the addresses as in the following example (supposing to have a single ModANA module with base address 22 and 3 used addresses, with output address enabled):

MODANA = (I22 , I23 , I24 , O22)

From the main menu of MCP IDE select programming, then Modules Configuration and then ModANA; the window in Figure 1 will be shown.

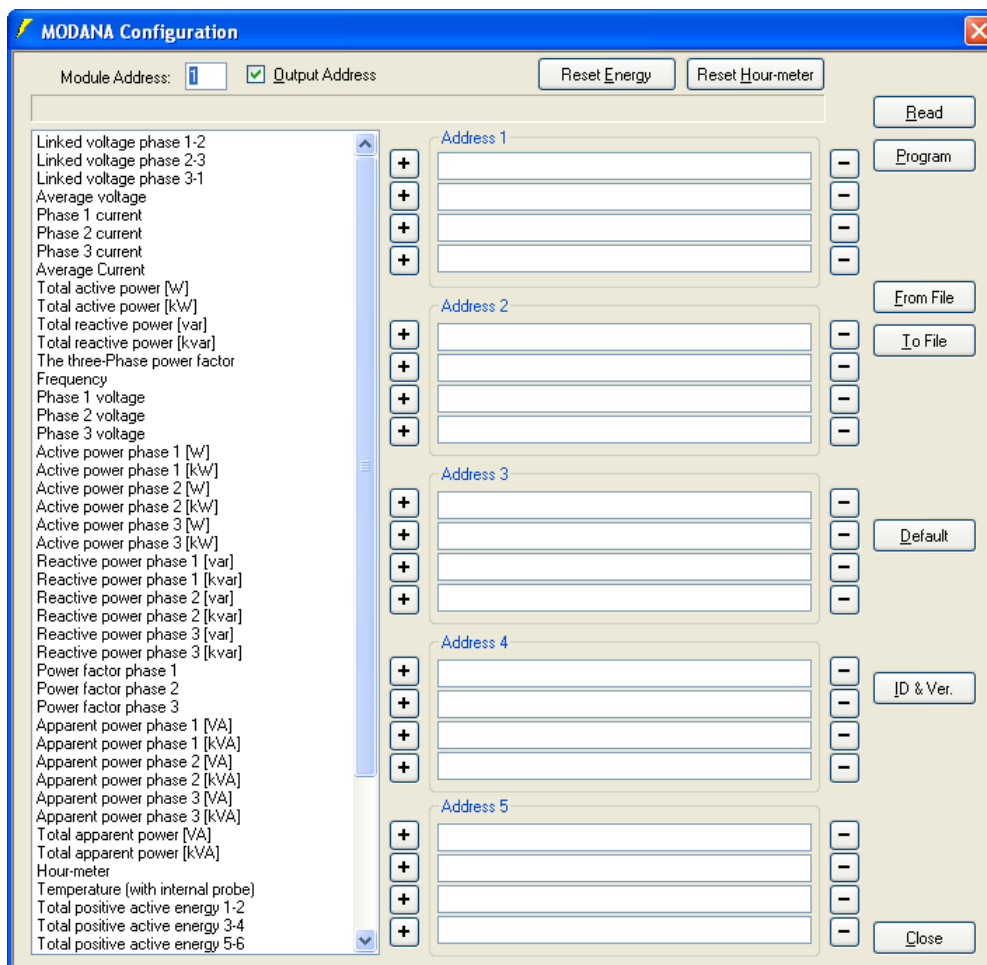


Figure 1: ModANA configuration panel

The left side of this window contains all parameters that can be reported by ModANA module, while the middle section of the window shows up to 5 addresses of the module, each one made by 4 channels (lines); insert the desired measurements in the channels selecting them in the list on the left side and then press the little button + near to the position where that measurement has to be inserted. To remove a measurement from the channel press instead the little button -.

Additional options in this windows are the following:

Module Address: it is the base address of ModANA module to be configured or to be read.

Output Address: enabling these parameter, the output address of ModANA will be activated (the value of the output address will be the same assigned to the base address).

Reset Energy: reset the energy counters.

Reset Hour-meter: reset the hour-meter.

Read: transfer the current configuration of ModANA to the configuration window.

Program: transfer the configuration currently displayed in the window to ModANA.

From File: load from a file the settings of ModANA and show them in the configuration window.

To File: save on a file the settings shown in the configuration window.

Default: remove all measurements from the channels shown in the configuration window (but not from ModANA).

ID & Ver.: ask to ModANA the ID code and the firmware version.

Close: quit the configuration panel.

As said before, the module will take a number of addresses (1 to 5) depending on the current compilation of the table shown in Figure 1.

If an empty table has been sent, then ModANA will take for default a single address reporting 4 null measurements.

Concerning all the measurement of active, reactive and apparent power, it is possible to choose from the list in the configuration panel the measured units between W or KW (or VAR/KVAR for reactive power, or VA/KVA for apparent power) as in the following figure.

Total active power [W]
Total active power [kW]
Total reactive power [var]
Total reactive power [kvar]

The choice must be done considering that the maximum value which can be transferred on the bus is

- x 65535 for active and apparent power
- x -32768 to 32767 for reactive power

If the installed active and apparent power does not override 65535 W (or VAR, or VA) choose the 1st case, otherwise choose the 2nd one (so that it is possible to report up to 65535 KW, o KVAR, o KVA). Idem for reactive power.

Concerning the active and reactive energy counters, each value is made by 6 bytes, therefore 3 channels are needed for each counter (e.g. total active power 1-2, 3-4 and 5-6).

The total value of the energy in KWh (or KVARh for reactive power) will be given by the formula:

$$65536 \times (\text{Energy 1-2}) + (\text{Energy 3-4}) + (\text{Energy 5-6}) / 1000$$

For instance, suppose to have:

- (Energy 1-2) = 35
- (Energy 3-4) = 33897
- (Energy 5-6) = 59

The energy value will be then:

$$65536 \times (35) + (33897) + (59) / 1000 = 2.327.657,059 \text{ KW}$$

that means more than 2327 MWh.

Mapping

The map of ModANA module can be displayed by MCP IDE (release 3.0.4 or higher) as shown in figure 2.

Like for all the group that can be displayed by MCP Visio, it is possible to place labels near to each measurement for an immediate visual identification.

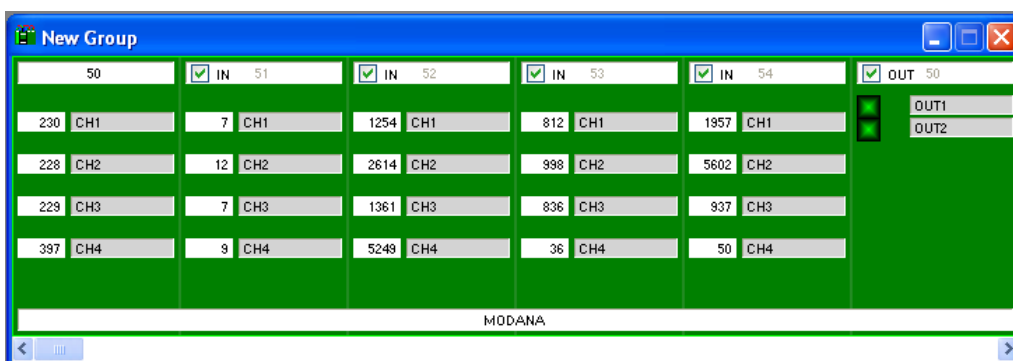


Figure 2: Map of ModANA module

Technical characteristics

Power supply, bus side	24V \pm 25% SELV
MAX current consumption bus side	40mA
Display	back lighted LCD, 2x16 characters
Measurement input voltage	15 \div 300V~ single-phase 30 \div 500V~ three-phase
Measurement input current	0,05 \div 6A
Measurement averaging time interval	1 \div 5 seconds
Voltage and current measurement accuracy	\pm 0,5% \pm 1 digit
Power measurement accuracy	\pm 1% \pm 1 digit
Data retention for energy, hour-meter and peaks measurements without power supply	2 months
Number of digital outputs	2 configurable as alarms or as pulses for energy counting
Aux power supply	115/230V~
Operating temperature range	-10 \div +50 °C
Recommended operating temperature range	+5 \div +40 °C
Storage temperature	-30 \div +70 °C
Protection degree	IP20

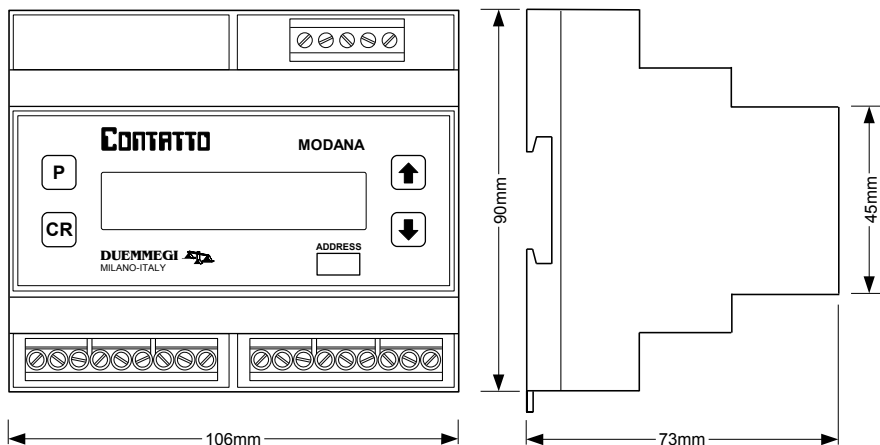
Note: For more information about the technical characteristics of the measurements section, refer top the ESAM user's manual.

Galvanic insulation

Insulation between:

Voltmetric and amperometric inputs	2KV/60 sec. 50Hz
Voltmetric inputs and bus	2KV/60 sec. 50Hz
Voltmetric inputs and pulse/alarm output	2KV/60 sec. 50Hz
Amperometric inputs and bus	2KV/60 sec. 50Hz
Amperometric inputs and pulse/alarm output	2KV/60 sec. 50Hz
Input and aux power supply	2KV/60 sec. 50Hz
Bus and aux power supply	2KV/60 sec. 50Hz
Pulse/alarm output and aux power supply	2KV/60 sec. 50Hz

Outline dimensions



Applied standards

This device complies with essential requirements of the following directives and norms:
2004/108/CE (EMC)
2006/95/CE (Low Voltage)
2002/95/CE (RoHS)
CEI85-15, EN60688, IEC688
CEI66-5, EN61010-1, IEC348, VDE0411
EN50081-2, EN50082-2 EN55011

Note

Technical characteristics and this data sheet are subject to change without notice.

Correct disposal of this product



(Waste Electrical & Electronic Equipment)

(Applicable in the European Union and other European countries with separate collection systems). This marking on the product, accessories or literature indicates that the product should not be disposed of with other household waste at the end

of their working life. To prevent possible harm to the environment or human health from uncontrolled waste disposal, please separate these items from other types of waste and recycle them responsibly to promote the sustainable reuse of material resources. Household users should contact either the retailer where they purchased this product, or their local government office, for details of where and how they can take these items for environmentally safe recycling. This product and its electronic accessories should not be mixed with other commercial wastes for disposal.

Installation and use restrictions

Standards and regulations

The design and the setting up of electrical systems must be performed according to the relevant standards, guidelines, specifications and regulations of the relevant country. The installation, configuration and programming of the devices must be carried out by trained personnel.

The installation and the wiring of the bus line and the related devices must be performed according to the recommendations of the manufacturers (reported on the specific data sheet of the product) and according to the applicable standards.

All the relevant safety regulations, e.g. accident prevention regulations, law on technical work equipment, must also be observed.

Safety instructions

Protect the unit against moisture, dirt and any kind of damage during transport, storage and operation. Do not operate the unit outside the specified technical data.

Never open the housing. If not otherwise specified, install in closed housing (e.g. distribution cabinet). Earth the unit at the terminals provided, if existing, for this purpose. Do not obstruct cooling of the units. Keep out of the reach of children.

Setting up

The physical address assignment and the setting of parameters (if any) must be performed by the specific softwares provided together the device or by the specific programmer. For the first installation of the device proceed according to the following guidelines:

- Check that any voltage supplying the plant has been removed
- Assign the address to module (if any)
- Install and wire the device according to the schematic diagrams on the specific data sheet of the product
- Only then switch on the 230Vac supplying the bus power supply and the other related circuits