

**MOD32I/A: 32 digital input module for NO contacts in modular housing**

MOD32I/A modules allow to transmit, through the **CONTATTO** bus, 32 ON-OFF signals coming, e.g., from push-buttons, limit switches, proximity switches, etc.

The 32 inputs of MOD32I/A module are arranged into four groups, each one consisting in 8 inputs (A1÷A8, B1÷B8, C1÷C8 and D1÷D8); a different address is assigned to each group.

The input contacts must be free of any potential and supplied by the reference voltage provided by the module itself (C terminals).

MOD32I/A module has four 9-poles terminal blocks for the input connections and a 5-poles terminal block for the connection to the 4 wires bus; the 5th pole of this last terminal block is used by the addresses programmer only.

A green LED on the front panel signals the power on condition.

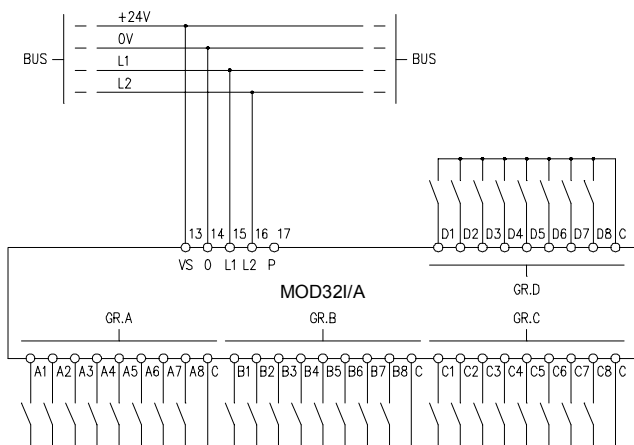
Four white labels on the front panel are reserved to write the addresses programmed in the module, related to the four input groups, for an immediate visual identification.

**Address programming**

Each module take up four consecutive addresses of the **CONTATTO** system, one for each 8 input group; to program the module, the start address only has to be set by the FXPRO programmer. As example, programming the module with address 3, it will be automatically programmed with the addresses 3, 4, 5 and 6; the lower address will be related to the group 1 (A1÷A8) while the higher one will be related to group 4 (D1÷D8).

**Wiring diagram**

MOD32I/A module allows the connection to potential-free contacts supplied by the voltage reference provided by the module for each input group (terminal C), as shown in the following diagram.



**Note:** the input section cannot be electrically insulated from the bus supply. The four C terminals are internally connected together.

**Technical characteristics**

Supply voltage	24V $\pm$ 25% SELV
MAX current consumption	100mA
Current for each input	2mA @ 24Vdc
Allowed input voltage	10 ÷ 40Vdc
Operating temperature	-10 ÷ +50 °C
Storage temperature	-30 ÷ +85 °C
Protection degree	IP20

**Outline dimensions**

